



2018-2019 ANNUAL REPORT

2019-2020 PLAN OF WORK



**Working since 1945 to conserve, protect and enhance
natural resources in central Carbon County**

Mission Statement

“Develop and direct programs to promote long-term conservation and enhancement of our natural resources while contributing to the economic stability of the Saratoga-Encampment-Rawlins Conservation District and its residents.”

Organized in 1945 by area ranchers concerned with erosion issues. Then known as Soil & Water Conservation District No. 16.

Locally led conservation is one of the most effective ways to help landowners and communities achieve their conservation goals. The Board of Supervisors recognizes natural resource policy decisions are ongoing and dynamic.

People define themselves by “their land”. The land and all its resources is among the most basic and important assets of a community.

Natural resources provide all the necessary ingredients for survival—food, water,

shelter, and room to roam. People, livestock, wildlife, open spaces, and abundant grasses, plants and trees are clearly included in this concept.

For over 70 years the Saratoga-Encampment-Rawlins Conservation District (SERCD) has been a local leader in natural resource issues. The responsibility to maintain and improve those resources is being carried out each day through district projects, the education program and by bringing various interested parties together

to achieve a common goal.

The challenges facing the district in the years ahead are complex. The district will move forward with the same vision and work ethic established by those local ranchers back in 1945—*locally led conservation efforts provide the most benefit for local residents and maintain natural resources for future generations.*

Partners

WACD	SRM	WLCI	WY GAME & FISH	CITY OF RAWLINS	PRIVATE LANDOWNERS
WDA	FSA	CCSD #1 AND #2	WY STATE FORESTRY	BOWHUNTERS OF WY	CARBON COUNTY STOCK GROWERS
WY DEQ	TU	WWNRT	WY STATE LAND BD	WWC ENGINEERING	WATERSHED RESTORATION LLC
EPA	USGS	WNRF	WATER FOR WILDLIFE	CARBON COUNTY COOP EXT.	SNOWY RANGE CATTLE WOMEN
NRCS	WYDOT	UNPVWUA/UNPVWCA	TOWN OF SARATOGA	TOWN OF RIVERSIDE	MEDICINE BOW C.D.
USFS	WWDC	RMEF	TOWN OF ENCAMPMENT	WYOMING FLYCASTERS	STADDLE CAMP
BLM	MFF	US FISH & WILDLIFE	TOWN OF SINCLAIR	UW EXTENSION	PARTNERS FOR FISH & WILDLIFE

Table of Contents

District Profile.....	4
Board Of Supervisors.....	5
District Staff.....	6
District Operations.....	7
Trees.....	8
Rangeland Enhancement.....	10
Water Development.....	11
Conifer Encroachment.....	12
Environmental Policy.....	14
Education.....	17
Trainings, Meetings, and Tours.....	19
FY 2018-19 Budget.....	20
FY 2019-20 Plan of Work.....	21
Long Range & Natural Resource Management Plan Goals and Objectives.....	22
District Staff Plan of Work Schedule.....	24
FY 2019-20 Budget.....	25

Contact Information

Office: 101 Cypress Avenue, Saratoga
Mailing: P.O. Box 633, Saratoga, WY 82331
Phone: 307-326-8156
Find us on the web @ SERCD.ORG

NRCS Contact Information

Mark Shirley, District Conservationist
Office: 101 Cypress Avenue, Saratoga
Mailing: P.O. Box 607 Saratoga, WY 82331
Phone: 307-326-5657

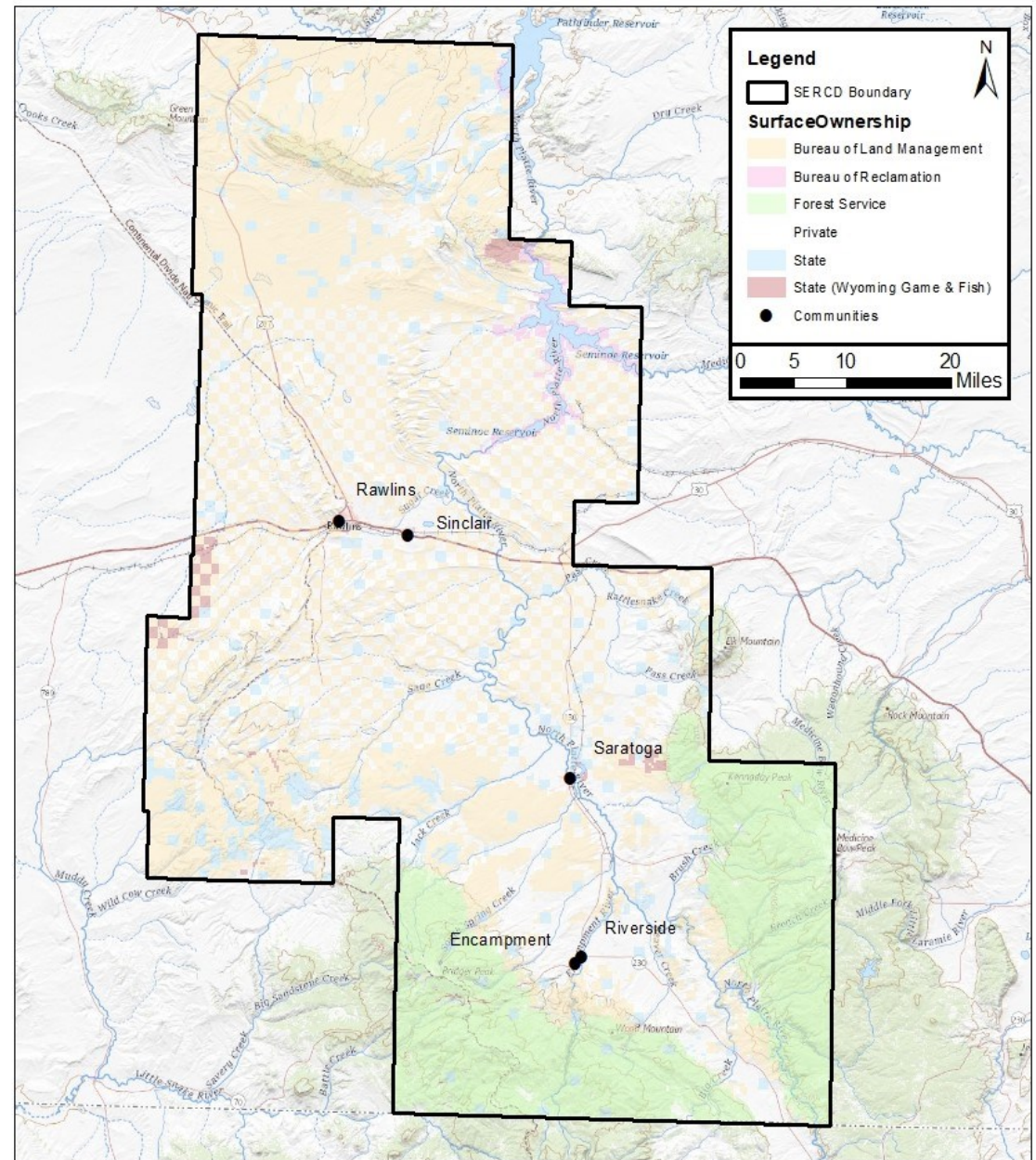
SERCD occupies the center of Carbon County and includes public and private lands and the largest urban areas in the county.

Elevations in the district range from 12,000 foot alpine tundra of the Snowy Range in the south to 5,800 foot sagebrush steppes at the extreme northern edge of the district near Pathfinder Reservoir.

The North Platte River is the major water body within the district. The Upper North Platte is the dominate watershed but there are also portions of six other watersheds within the district.

- 2.7 million acres
- 37% private
- 58% public
- 5% state

Saratoga-Encampment-Rawlins Conservation District





Arla Strasser
Chairwoman



Dan Mika
Vice Chairman



Chris Williams
Secretary



Randy Arnold
Treasurer



Scott Kerbs
Member

Board of Supervisors

- Elected by popular ballot during general election.
- Serve 4 year terms without pay.
- Attend monthly board meetings, Area IV Annual Meeting and Convention, various public agency meetings and seminars.
- Oversee District programs and projects.
- Provide direction for District staff.
- Engage public opinions and concerns
- Ensure tax payer's money is used wisely

Associate Members



Jack Berger



Jim Miller



Dan Runner

- Jack Berger served on the Board of Supervisors from 2004-2016
- Jim Miller represents SERCD on the Carbon County Land Use Plan Steering Committee
- Dan Runner served on the Board of Supervisors from 1996-2004



Joe Parsons
District Manager

Joe grew up in Hulett, WY. After serving four years in the Marine Corps, Joe graduated from the University of Wyoming with a degree in Wildlife & Fisheries Biology and Management. He joined SERCD as District Manager in 2012. He oversees all District operations, natural resource field projects and maintains working partnerships with various agencies. Joe was named the WACD Outstanding Employee of the Year in 2017. And he most recently accepted the U.S. Forest Service 2018 Rise to the Future Award on behalf of SERCD for his work with partner agencies to improve fisheries.



Garrett Pantle
Resource Specialist

Garrett joined SERCD in 2016. He is a graduate of the University of Wyoming with a BS in Rangeland Ecology and Watershed Management and minors in Forest Resources and Reclamation and Restoration Ecology. Garrett is responsible for District field projects which develop and enhance natural resources for Ag producers and residents. He works with partner agencies and private landowners, completes grant applications and reimbursements.



Leanne Correll
Education/NEPA Coordinator

Leanne was named Education/NEPA Coordinator in March 2019. She holds a BS in Animal Science from Colorado State University and MS in Rangeland Ecology and Watershed Management from the University of Wyoming. Since 2014, she acted as the District's National Environmental Policy Act (NEPA) Consultant. Now, Leanne is responsible for the Natural Resource Education Program and represents the District on local, state, and Federal projects which have the potential to impact the District.



Jean Runner
Office Manager

Jean was hired as Office Manager/Education Coordinator in 2002. She holds a degree in Business Management and Marketing from Chadron State College. From 2002-2019 she developed and implemented the District's Natural Resource Education Program. Jean oversees budgeting and the financial operations for the District.

Fiscally responsible management of all public funds, grants and other income while building reserves for the future.

- Funding is allocated to promote on-the-ground conservation practices.
- Staff and Board of Supervisors develop cost effective programs for producers to enhance conservation practices.
- Financial management includes wise use of tax payer dollars and establishing reserves for the future.
- Monthly financial reports include projected and actual revenue and expense line items.
- Net use of cash is established on a monthly basis.
- Bank statements are reconciled on a monthly basis and all accounts are balanced against the budget.
- Risk management policies are approved each fiscal year.
- Wyoming Department of Audit reporting requirements.
- Wyoming Department of Revenue compliance.
- Annual Report and Plan of Work.
- Public Budget Hearing.
- WACD and WDA fiscal year funding requirements.
- FY Budget is prepared in accordance with state statutes.

FY2018-19 Highlights

- SERCD launches new updated website. **sercd.org**
- Leanne Correll is hired on to take over as Education/NEPA Coordinator
- Joe Parsons accepts U.S. Forest Service 2018 Rise to the Future Award on behalf of SERCD.
- SERCD Natural Resource Education Program reaches approximately 1075 students, 775 students in schools and 300 in summer camp.
- Education program expands to include Carbon in Your Daily Lives and Sagebrush Steppe Ecosystem Units for Staddle Camp and Carbon County School Districts #1 and #2.

The best time to plant a tree was 20 years ago; the next best time is now!



Seedling Tree Program

Deciduous and evergreen conservation grade seedlings are offered for sale to District residents.

Tree list recipients receive order forms in January and trees are available for pick up at the District office in early May.

All seedlings are suitable for the local climate and the district provides assistance for tree health, planting techniques and maintenance.

Weed barrier and tree protectors can also be purchased and the district encourages people to install both to maximize growth success.



Cost Share Program

The District provides cost share for conservation tree plantings. Landowners must live on 5+ acres. A planting plan is developed and species are chosen which best fit the need, site, soil type and location.

District staff work closely with the landowner to make sure the planting site provides the benefits of protection for roads, livestock shelter and buildings.

The components of these plantings include: site prep (fall and spring), tree planting, installation of weed barrier, tree protectors and a drip system. Fencing may also be included.



Living Snowfence Program

Since 1999, the District has installed eleven Living Snow fence plantings (LSF). These have been placed from north of Rawlins to near the Colorado-Wyoming border to help protect roadways from drifting snow.

These plantings can be funded in a variety of ways and private lands qualify with landowner permission.

Trees - Urban Connection

In April of 2018, a large fire occurred at the Saratoga Forest Management lumber mill. The fire burned intensely for a couple of days and unfortunately, killed a number of large trees at the Saratoga Cemetery. SERCD stepped in to assist in the annual Saratoga Arbor Day celebration by removing the dead trees and providing replacements. Partnering agencies included Town of Saratoga, Wyoming Game & Fish, and Wyoming State Forestry. Inclement weather prevented the students from joining in the fun this year.

SERCD also provided seedling trees to the City of Rawlins for its recycle program “Trees for Trash”. Residents receive seedling trees when they drop off items for recycling.



SERCD Tree Program

- Great opportunity to partner with municipalities within the District.
- Partnerships bring together diverse groups of people to enhance each community through natural resource education.
- Provides natural resource education for both youth and urban residents.



Seedlings are provided to the City of Rawlins, Saratoga Parks and Recreation Board and the Saratoga Schools at no charge as part of their Arbor Day Celebrations.

SERCD continues to provide producers with the necessary tools to improve rangeland and wildlife habitat.



Monitoring

SERCD staff assist landowners with the development and implementation of monitoring plans. In 2019, SERCD staff also assisted with multiple monitoring efforts with the University of Wyoming, BLM, and Wyoming Game and Fish Department.



Wildlife-Friendly Fencing

The conversion of fence to wildlife-friendly has become a high priority project for SERCD. Working with WGFD staff and using their collar data, staff have identified areas where fences are hazardous to wildlife. The conversion of these hazardous fences should insure safer movement and migration by wildlife.

In 2018-19, approximately 5.5 miles of high-risk fence was removed and replaced with wildlife-friendly fence.

SERCD, BLM, and WGFD staff have also identified several miles of high-risk fence that will be converted to wildlife-friendly in 2019-20.





Partner Collaboration

SERCD staff spend every winter working with partners to identify and prioritize projects for the upcoming field seasons. BLM and WGFD staff have been instrumental in identifying project areas and solidifying funding. Partner collaboration continues to be the backbone of SERCD's range program.

Tire Tanks

SERCD has provided tire tanks for water development since 1994. Our inventory allows us to have them readily available for private landowners, NRCS cost share programs and other partner agencies.

Wildlife escape ramps are available at no cost to all producers who have installed tanks. Ramps are supplied through a grant from WY Wildlife Natural Resource Trust Fund, South Central Sage Grouse Local Working Group, and SERCD.



Water Developments

The development of water resources is a major component of the range program. Projects occur on a variety of ownerships including USFS, BLM, State, and/or private. Common water developments include:

- Gravity-flow spring development
- Solar powered development
- Well water development
- Reservoirs/stock ponds
- Water pipelines
- Storage facilities

Conifer Encroachment

Conifer encroachment treatments consisted of treating encroaching Rocky Mountain junipers along the west slope of Barrett Ridge in southeast Carbon County along the west face of the Snowy Range Mountains. Mechanized equipment was utilized to remove 684 acres of encroaching conifers from mixed mountain shrub habitat within identified stopover areas in migration corridors for mule deer. All treatment areas were identified within migration corridors and winter habitat for mule deer, elk, and antelope. Treatment areas were identified within Priority Habitat Management Areas for Greater Sage Grouse.



Jean Runner Recognized Statewide for Outstanding Education Work

Jean Runner has worked with the Saratoga-Encampment-Rawlins Conservation District for 17 years as the education program specialist and the office manager. She was recognized by Wyoming Agriculture in the Classroom and the Wyoming Livestock Roundup this year for her outstanding work bringing agriculture and conservation practices to many classrooms. She has brought information ranging from water quality to pollinators and renewable energy (and so much more) to many kids throughout the years and is a fantastic asset to her local community and state.



Fish Your National Forests Award

Joe Parsons accepted the 2018 “Fish Your National Forest” award on behalf of the SERCD. Joe traveled to Washington D.C. this past June to receive this award from the U.S. Forest Service for SERCDs work in helping to restore fish habitats on the North Platte River. Joe and the SER CD have been working with Christina Barrineau, an Aquatic Habitat Biologist with the Wyoming Game and Fish Dept., and Jeff Streeter, who is the North Platte River water project manager for Trout Unlimited since 2011. In the past 8 years they have accomplished a great deal. A few examples include removing 13 barriers (which has reconnected 111 + miles of wild trout habitat), they have raised \$5 million (for fish passage, stream restoration, and riparian enhancements), and have restored 3.8 miles of river channel so far!

The National Environmental Policy Act (NEPA) requires all federal agencies to cooperate to the fullest extent possible with state and local governments. The District has taken an active role in developing working relationships with the various federal agencies through Memorandums of Understanding and seeking cooperating agency status on federal planning documents which impact the District.

SERCD Land Use Planning Activities for 2018-19

- Adopted and implementing a local long-range land use and natural resource management plan to have a substantive impact on federal/state/county decisions, plans, policies, and programs. The plan is updated every five years.
- Take an active role in developing working relationships with many local, state, and federal agencies which impact the District.
- Participate as a cooperating agency in federal decision-making processes.



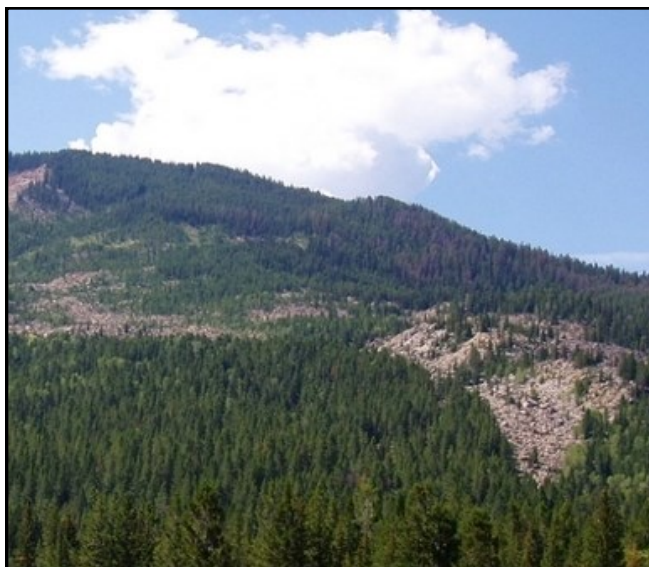
SERCD reviewed, analyzed, advocated, commented, and participated as a cooperating agency on local, state and federal legislation, rules and regulations promulgated or revised that may have an effect on the District and its residents. Many of these projects have a multi-year planning component and the implementation phase spans from years to decades. The number of active projects with district participation continues to grow. SERCD will continue its participation on these important projects now and into the foreseeable future.

Bureau of Land Management

- Blowout Penstemon Area of Critical Environmental Concern Plan
- Chokecherry-Sierra Madre Wind Development Project
- Gateway West Transmission Line
- National Environmental Policy Act Planning Regulations
- Rawlins Resource Management Plan (RMP) Visual Resources Management (VRM) Amendment
- Rawlins Bureau of Land Management Grazing Permit Renewal Environmental Assessments
- TransWest Express Transmission Line Project
- Viridis Master Plan Wind Energy Development Project
- Wyoming Greater Sage-grouse Resource Management Plan Amendment

Forest Service

- Land Management Plan Greater Sage-Grouse Amendments
- Medicine Bow National Forest Landscape Vegetation Analysis (LaVA) Project
- National Environmental Policy Act (NEPA) Proposed Rule
- North Savery Project (Forest Service) Environmental Impact Statement
- Ryan Park Vegetation and Fuels Project



Other Agencies

- Carbon County Conditional Use Permit for TransWest Transmission Project
- Energy Corridor Review—Regions 4, 5, and 6: Bureau of Land Management and Forest Service
- Waters of the United States (WOTUS)
- Wyoming Department of Environmental Quality Turbidity Waivers
- Wyoming Department of Environmental Quality, Water Quality Division Chapter 1 Water Quality Review
- Wyoming Weather Modification

SERCD is the local agency which residents and partners look to for expertise in all land use issues and NEPA reviews.

Projects—Implementation Phase or Intermittent Activities or Projects on Hold

- Biomass Use Projects
- BLM Planning 2.0 (Bureau of Land Management)
- Gateway South Transmission Line Project (Bureau of Land Management)
- Medicine Bow National Forest Land Use Plan
- Rawlins Field Office Bureau of Land Management Resource Management Plan
- Water Supply Project (Bureau of Land Management)
- West Side Snowy Range Travel Management (Forest Service)



The District has adopted specific policies by resolution for those priority issues of concern within the list of resource categories below. Refer to the Long Range Plan for further details.



- Agriculture
- District Operations/Education
- Ecosystem Services
- Energy Development & Mining/Minerals
- Private Property Rights
- Socioeconomics
- Soils
- Vegetation—General, Conservation Forestry,
- Rangeland Health and Management
- Water Resources
- Wildlife
- Wild and Feral Horse

Encouraging good stewardship of the land one student at a time.

SERCD's Natural Resource Education Program reached over 775 students during the 2018-19 school year in Carbon County School Districts #1 and #2. In 2018-19, the education program expanded to include units on Carbon in Our Daily Lives and Sagebrush Steppe Ecosystem.



Ag Day with CCSD #2 Schools

Students at Saratoga and Encampment Elementary Schools participated in the 3rd Annual Ag Day event. The theme for this year's event was "7 Stages of Beef Production". Students at Saratoga rotated through nine stations where they learned about various facets of beef production including the SERCD station "How Feedstuffs Become Beef". Encampment students had an abbreviated 4 stations for their Ag Day event.

It was a very successful collaboration with the Snowy Range Cattle Women, Carbon County Stock Growers, UW Extension, and RNB State Bank and emphasizes the important of our partnerships in natural resource education.



Staddle Camp

Since 2011, SERCD has provided natural resource education at Staddle Camp located in the Snowy Range. Up to 300 students and 36 teachers and chaperones from 30 schools attend weekly camp sessions from June through August.

This year, presentations to all attendees on "Carbon in Our Daily Lives", "Sagebrush Steppe Ecosystem", and "Sagebrush Wildlife". Lessons included discussions and hands-on activities encompassing the importance of carbon in our lives and how agriculture is connected to everything in an ecosystem.

Natural Resource Education for District Residents

Winter Workshop

SERCD partnered with the Medicine Bow Conservation District to produce the 13th Annual Winter Workshop. This years workshop focused on “On the Land; Success Stories from the Ranch; a Business Approach”. Speakers included: Burke Teichert, Dallas Mount, John Heyneman, Jim Mathis, Niels Hansen, and Curt Epler.



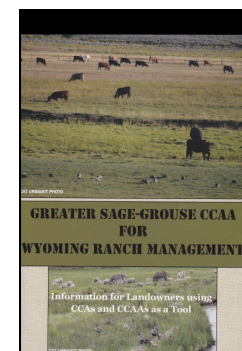
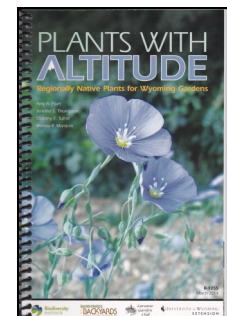
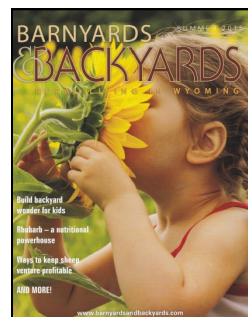
Community Natural Resource Issues

SERCD participates in a wide variety of public meetings and seminars which focus on the natural resources in the District. SERCD is active in the Platte Valley Habitat Partnership, Sage Grouse Local Working Group and other community gatherings which promote natural resource development and conservation.

Publications

The District has many informational brochures, magazines and booklets available to the general public at no cost.

Extra copies are given to public libraries, area schools and available at our Carbon County Fair booth display.



SERCD Supervisors and Staff attend various trainings, meetings, and tours.

Meetings

- Wyoming Landscape Conservation Initiative
- Natural Resource Conservation Service Local Working Group
- Sage Grouse Local Working Group
- Wyoming Wildlife Natural Resource Trust
- Wyoming Public Land Initiative
- United States Forest Service Coop Meeting
- Platte Valley Habitat Partnership
- Boozer Creek
- Bureau of Land Management Lek Meeting
- Wyoming Water Development Commission
- Wyoming Game & Fish Department Season Setting Meeting
- Grizzly Allotment Meeting
- Wyoming Association of Conservation Districts Board
- Towns of Saratoga & Riverside
- Natural Resource Conservation Service Tech Meeting
- Landscape Vegetation Analysis

Tours

- Wyoming Wildlife Natural Resource Trust Tour
- United States Forest Service Tour
- Chokecherry Sierra Madre Wind Farm Tour
- Daley & Grizzly Allotment Tour
- Platte Valley Habitat Partnership Field Tour
- North Platte River Tour
- Rawlins Bureau of Land Management Field Tour



FY 2018-2019 Budget

Saratoga-Encampment-Rawlins Conservation District FY2018-19 Budget		
Beginning Cash		250,909
<u>Revenues:</u>		
Mill Levy		250,000
Interest Income		300
Program Funding		18,784
Rental Income		54,504
Natural Resource Projects		786,900
Total Revenue		1,361,397
Cash Reserves	315,091	
<u>Operating Expenses:</u>		
Payroll		253,000
NEPA		30,000
Operating Expenses		78,000
Programs		35,000
Field Equipment		20,000
Capital Reserve		5,000
Natural Resource Projects		805,900
Total Expenses		1,226,900
Ending Cash Balance		134,497



**SARATOGA-ENCAMPMENT-RAWLINS
CONSERVATION DISTRICT**

**FY 2019-2020
PLAN OF WORK**

Goal: Maintain accountability of all public funds and provide professional service in a timely and responsible manner.

Objectives:

- Develop new funding strategies to promote on-the-ground conservation practices.
- Allocate staff and Supervisors' time to accomplish objective.
- Fulfill Board's goals and objectives on natural resource issues.
- Participate in education opportunities to gain knowledge and skills for resource issues and to provide current information to district residents.
- Expand self-funded projects.
- Develop guidelines and implement scholarship program in area schools.
- Participate in the Local Work Group to address resource concerns and NRCS programs.

Trees	Range	Water Quantity
<p>Goal: Promote the wise use of our tree resources.</p> <p>Objectives:</p> <ul style="list-style-type: none"> • Increase seedling tree mailing list and sales and conduct tree work-shops. • Investigate economic development of forest resources. • Assist landowners and agencies with design and implementation of Living Snow fence and implement cost-share conservation plantings. 	<p>Goal: Provide expertise and guidance to promote healthy rangelands.</p> <p>Objectives:</p> <ul style="list-style-type: none"> • Monitor present sites, install new transects, analyze data and develop trends. • Enhance working relationships with local, state and federal agencies. • Provide assistance to landowners/cooperators to implement BMP's on grazing land. • Provide educational opportunities for sustainable use of rangelands. 	<p>Goal: Promote the conservation and availability of water for all beneficial uses.</p> <p>Objectives:</p> <ul style="list-style-type: none"> • Protect all water rights. • Provide assistance to promote efficient use of irrigation water. • Promote the wise use of water to ensure future water supplies. • Participate in watershed studies and plans.

Water Quality	Environmental Policy	Education
<p>Goal: Provide leadership to maintain or improve the quality of water within all watersheds in the SER Conservation District.</p> <p>Objectives:</p> <ul style="list-style-type: none"> • Provide assistance on local water quality issues. • Continue efforts to remove all DEQ listed waters. 	<p>Goal: Participate in a cooperative effort in resource enhancement and protection.</p> <p>Objectives:</p> <ul style="list-style-type: none"> • Participate with federal agencies in their land planning efforts. • Participate in NEPA planning efforts that may have impacts on the district and its residents. 	<p>Goal: Provide natural resource education.</p> <p>Objectives:</p> <ul style="list-style-type: none"> • Expand educational programs in the schools, to organizations, and for co-operators/landowners. • Utilize newspapers and newsletters for dissemination of educational information to the public.
Soils	Wildlife	
<p>Goal: Promote the conservation of soils.</p> <p>Objectives:</p> <ul style="list-style-type: none"> • Support NRCS programs that provide for reduction of soil erosion. • Assist NRCS by initiating contacts with landowners that need assistance in different venues. • Support completion of NRCS Soil Survey 	<p>Goal: Promote the sustainability of healthy populations and their contributions to the economic stability of the District.</p> <p>Objectives:</p> <ul style="list-style-type: none"> • Participate in public forums for wildlife/conservation projects. • Work with private landowners to fund and implement actions/programs that enhance or increase habitat. • Cooperate with other agencies in their wildlife programs/efforts. • Take an active role in the PVHP. 	

District Staff Plan of Work

Duty	Timetable	Staff	July	Aug	Sept	Oct	Nov	Dec	Jan	Feb	Mar	April	May	June
Financial	FY19-20	Office Mgr	X	X	X	X	X	X	X	X	X	X	X	X
Budget	FY19-20	Office Mgr Staff input	X					X	X	X	X	X	X	X
Grants	FY19-20	SRS Office Mgr	X	X	X	X	X	X	X	X	X	X	X	X
Reports	FY19-20	SRS Office Mgr	X	X	X	X	X	X	X	X	X	X	X	X
Trees	FY19-20 Field season Tree forms	SRS ADM	X	X	X				X	X	X	X	X	X
Range	FY19-20 Field season	SRS	X	X	X	X					X	X	X	X
Water	FY19-20 Field season	SRS	X	X	X	X	X	X	X	X	X	X	X	X
Environmental	FY19-20	SRS	X	X	X	X	X	X	X	X	X	X	X	X
Education	FY19-20	Education Coordinator	X	X	X	X	X	X	X	X	X	X	X	X
Soils	FY19-20 S/D Reviews	SRS	X	X	X	X	X	X	X	X	X	X	X	X
Wildlife	FY19-20 Field season & Partner agencies	SRS	X	X	X	X	X	X	X	X	X	X	X	X
Land Use	FY19-20	SRS	X	X	X	X	X	X	X	X	X	X	X	X
Cost-share Programs	FY19-20 Field Financial	SRS Office Mgr	X	X	X	X	X	X	X	X	X	X	X	X
Self-Funded	FY19-20	SRS Office Mgr	X	X	X	X	X	X	X	X	X	X	X	X
Grants	FY19-20 & continuing projects	SRS Office Mgr	X	X	X	X	X	X	X	X	X	X	X	X

FY 2019-20 Budget

Saratoga-Encampment-Rawlins Conservation District FY2019-20 Budget		
Cash Balance Forward		326,304
<u>Revenues:</u>		
Mill Levy		285,000
WDA Grant		8,824
Program Funding		11,000
Rental Income		54,504
Natural Resource Projects		458,208
Total Income		1,143,840
Cash Reserves	312,096	
<u>Operating Expenses:</u>		
Payroll		336,000
Programs		15,000
Operating Expenses		79,800
Field Equipment		20,000
Capital Reserve		5,000
Natural Resource Projects		463,208
Total Expenses		919,008
Ending Cash Balance		224,832